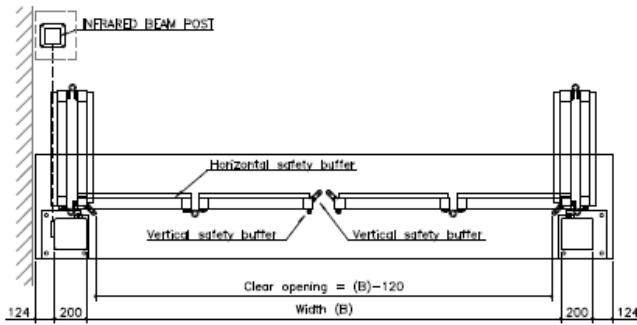
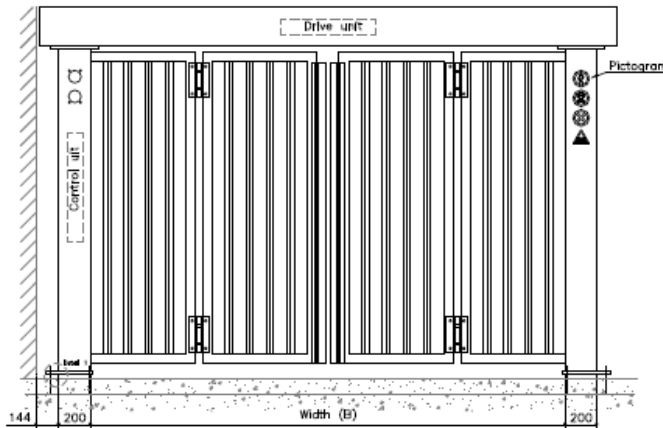


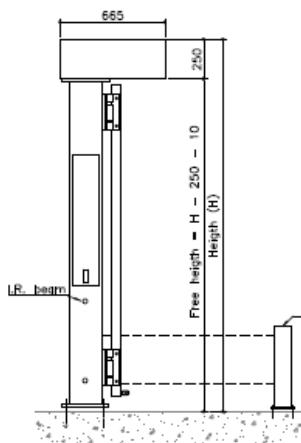
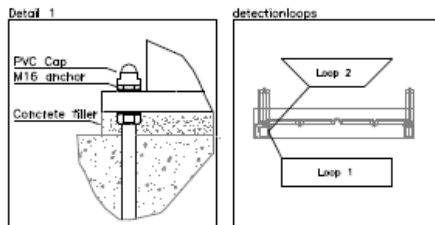
Technical specifications **Bavak Speedgate B-protect**



Plan view



Front view



Side view

- SPEEDGATE**
- DRIVE HOUSING STEEL PLATES
 - GATE COLUMNS RHS 200x200 (if W or H > 5000 than 250x250)
 - GATE FRAMES PROFILE 60x60 (if W or H > 5000 than 80x80)
 - FRAME INFILL VERTICAL BAR RHS 30x30 +
 - HINGES
 - 4 VERTICAL SAFETY BUFFERS 2.0 METERS HIGH
 - 4 HORIZONTAL SAFETY BUFFERS
 - 2 INFRARED BEAM TYPE FOR HORIZONTAL BETWEEN COLUMNS
 - 2 SERVICE LD AT INNER SIDE COLUMNS
 - ANCHOR FORCE DEPENDS ON SIZE OF GATE
 - ELECTRICAL MOTOR 0,75kW
 - SPEEDGATE COMPLES TO NORME EN 12341
- * OTHER FRAME INFILL ON REQUEST

- REMARKS / OPTIONS**
- TRAFFIC LIGHTS, CONTROL CABINET, INFRARED BEAM POST AND DETECTION LOOPS ARE OPTIONAL
 - INFRARED BEAM POST IS NECESSARY WHEN XENTRY IS PLACED 500mm OR LESS FROM A WALL OR OTHER GATE

Dimensions: (between the columns)
 Height: 2.000 – 7.000mm
 Width : 2.000 – 7.000mm

Construction:
 4 panels made of RHS profile, bi-folding; 2 columns RHS profile 200 x 200 x 6mm or 250 x 250 x 6mm with service hatch; Header unit of 4mm steal with guiding rail and service hatches.

Gate panels:
 Panel frame: RHS 60 x 60 x 3 mm of 80 x 80 x 3mm;
 Panel infill: RHS 35 x 35 x 2 mm, (45°).

Drive:
 Electro mechanical (0,75 kW and 1,1kW) with assembled gear unit. Emergency opening via manual gear override on the second end of the axle gear box.

Safety:
 Photocells in the column: 2 sets horizontal, class 3; 4 vertical safety buffers at the front side of the 2 inner leaves; 4 horizontal safety buffers at the lower beams of the leaves; Compliant with the safety regulations EN 13241-1.

Finish:
 Sand blasted SA 2½ - 3; Zinc metalized, 30 µm; Powder coating; DTM coating.

Control unit:
 Integrated in the left column (0,75kW version), accessible through the inspection hatch. Feig-FUZ controller unit with integrated safety loop amplifier. Control and wiring strip are finished in a waterproof junction box IP66. Extra space in the right column for peripherals.

Locking of gate panels:
 Mechanical.

Features:
 Variety fasteners, galvanized (not coloured) and icons.
 Optional: Extra photocell between the static and moving parts at distances < 500mm, led-traffic light(s) integrated in the columns, access control and/or foundation, cabling, detection loops in front of and behind the Bavak Speedgate B-protect.